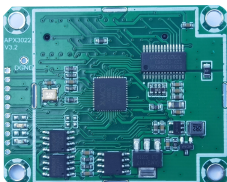
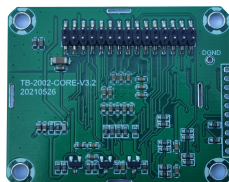


APX6022-V3.2 Reference design

OVERVIEW:



Top view

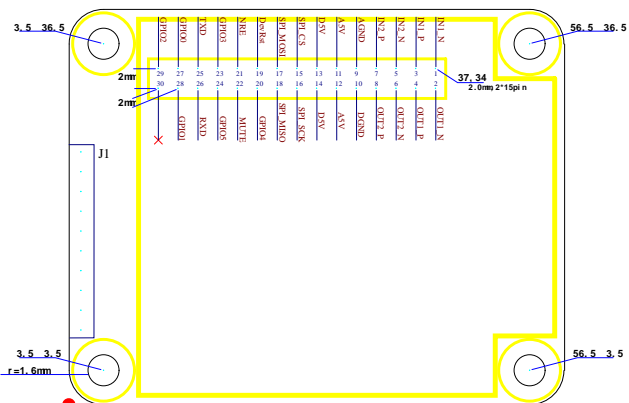


Bottom view

NOTE:

The pin1 of the module is on the upper left on above "bottom view" photo.

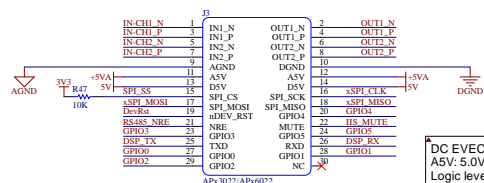
PCB SIZE:



J1 just for debug, don't need to connect.

Unit:mm

PIN DEFINE:

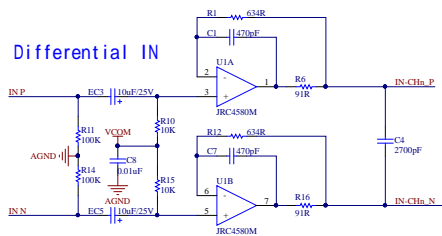


DC ELECTRICAL CHAR.:
 A5V: 5.0V, D5V: 5.0V
 Logic level low: <0.3v
 Logic level high: >3.0v
 Power consumption: 5V/300mA(Typ)

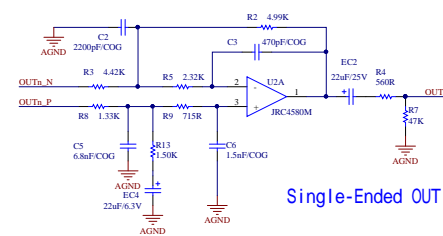
DAC:
 Sampling: 24BIT/96K
 DR: >110dB, THD+N: -98dB(Typ)
 Full-scale: 4.8vPP(Diff)/2.4vPP(Single)
 Output resistance: 100R(Typ)
 AC-Load resistance: 3K(Typ)

ADC:
 Sampling: 24BIT/96K
 DR: >110dB, THD+N: -98dB(Typ)
 Full-scale: 5.65vPP(Diff)/2.82vPP(Single)
 Input impedance: >=37K

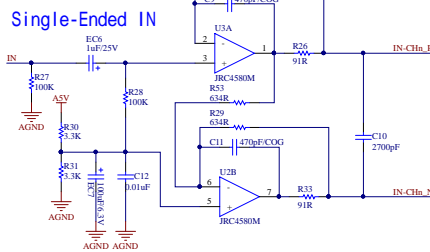
INPUT BUFFER



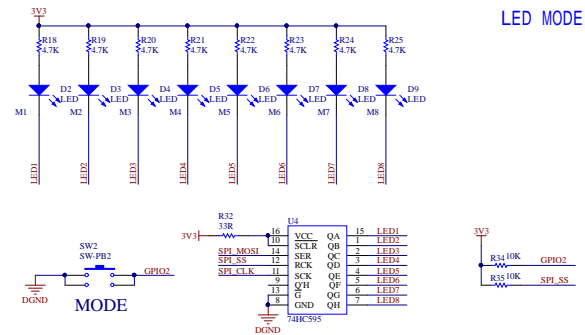
OUTPUT BUFFER&LPF



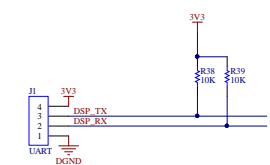
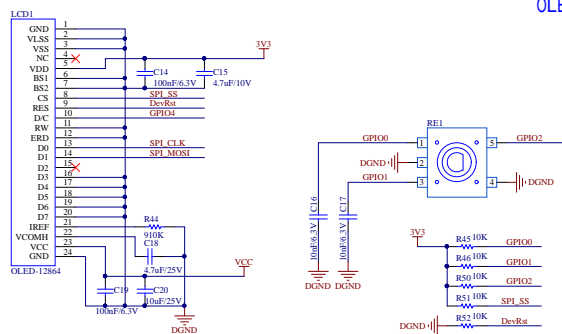
INPUT BUFFER



LED MODE



OLED MODE



UART MODE RS485 MODE

