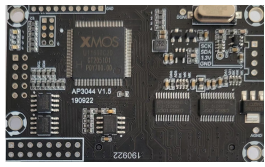
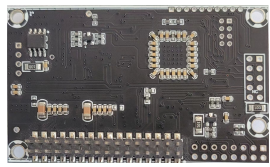


APX3044-V1.0 Reference design

OVERVIEW:



Top view

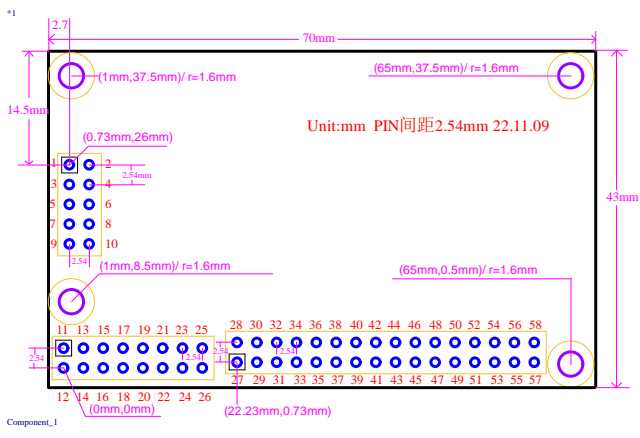


Bottom view

NOTE:

The pin1 of the module is on the upper left on above "bottom view" photo.

PCB SIZE:



PIN DEFINE:

DC ELECTRICAL CHAR.:
 ASV: 5.0V, D5V: 5.0V
 Logic level low: $e0.3V$
 Logic level high: >3.0V
 Power consumption: 5V/300mA(Typ)

DAC:
 Sampling: 24BIT/96K
 DR: >110dB, THD+N: -98dB(Typ)
 Full-scale: 4.8VPP(Diff)/2.4VPP(Single)
 Output resistance: 100R(Typ)
 AC-Load resistance: 3K(Typ)

ADC:
 Sampling: 24BIT/96K
 DR: >110dB, THD+N: -98dB(Typ)
 Full-scale: 5.65VPP(Diff)/2.82VPP(Single)
 Input impedance: >=37K

HS_MCK	1	USA	2	HS_BCK
HS_WCK	3	HS_MCK	4	HS_ADC
HS_SDA	5	HS_WCK	6	HS_SCK
HS_SCL	7	HS_SDA	8	HS_SCK
AES_aReady	9	HS_SCL	10	AES_aReset
DGND	11	AES_aReady	12	AES_aReset
		5V-OUT	13	
		DGND	14	

DGND	11	VSS	12	DVDD5
LCD_WR	13	V0	14	LCD_RS
LCD_DB0	15	LCD_WR	16	LCD_CS
LCD_DB1	17	LCD_DB0	18	LCD_DB1
LCD_DB2	19	LCD_DB1	20	LCD_DB2
LCD_DB3	21	LCD_DB2	22	LCD_DB3
LCD_DB4	23	LCD_DB3	24	LCD_DB4
LCD_DB5	25	LCD_DB4	26	LCD_DB5
LCD_DB6	27	LCD_DB5	28	LCD_DB6
LCD_DB7	29	LCD_DB6	30	LCD_DB7
LCD_DB8	31	LCD_DB7	32	LCD_DB8
LCD_DB9	33	LCD_DB8	34	LCD_DB9
LCD_DB10	35	LCD_DB9	36	LCD_DB10
LCD_DB11	37	LCD_DB10	38	LCD_DB11
LCD_DB12	39	LCD_DB11	40	LCD_DB12
LCD_DB13	41	LCD_DB12	42	LCD_DB13
LCD_DB14	43	LCD_DB13	44	LCD_DB14
LCD_DB15	45	LCD_DB14	46	LCD_DB15
LCD_DB16	47	LCD_DB15	48	LCD_DB16
LCD_DB17	49	LCD_DB16	50	LCD_DB17
LCD_DB18	51	LCD_DB17	52	LCD_DB18
LCD_DB19	53	LCD_DB18	54	LCD_DB19
LCD_DB20	55	LCD_DB19	56	LCD_DB20
LCD_DB21	57	LCD_DB20	58	LCD_DB21
LCD_DB22	59	LCD_DB21	60	LCD_DB22
LCD_DB23	61	LCD_DB22	62	LCD_DB23
LCD_DB24	63	LCD_DB23	64	LCD_DB24
LCD_DB25	65	LCD_DB24	66	LCD_DB25
LCD_DB26	67	LCD_DB25	68	LCD_DB26
LCD_DB27	69	LCD_DB26	70	LCD_DB27
LCD_DB28	71	LCD_DB27	72	LCD_DB28
LCD_DB29	73	LCD_DB28	74	LCD_DB29
LCD_DB30	75	LCD_DB29	76	LCD_DB30
LCD_DB31	77	LCD_DB30	78	LCD_DB31
LCD_DB32	79	LCD_DB31	80	LCD_DB32
LCD_DB33	81	LCD_DB32	82	LCD_DB33
LCD_DB34	83	LCD_DB33	84	LCD_DB34
LCD_DB35	85	LCD_DB34	86	LCD_DB35
LCD_DB36	87	LCD_DB35	88	LCD_DB36
LCD_DB37	89	LCD_DB36	90	LCD_DB37
LCD_DB38	91	LCD_DB37	92	LCD_DB38
LCD_DB39	93	LCD_DB38	94	LCD_DB39
LCD_DB40	95	LCD_DB39	96	LCD_DB40
LCD_DB41	97	LCD_DB40	98	LCD_DB41
LCD_DB42	99	LCD_DB41	100	LCD_DB42
LCD_DB43	101	LCD_DB42	102	LCD_DB43
LCD_DB44	103	LCD_DB43	104	LCD_DB44
LCD_DB45	105	LCD_DB44	106	LCD_DB45
LCD_DB46	107	LCD_DB45	108	LCD_DB46
LCD_DB47	109	LCD_DB46	110	LCD_DB47
LCD_DB48	111	LCD_DB47	112	LCD_DB48
LCD_DB49	113	LCD_DB48	114	LCD_DB49
LCD_DB50	115	LCD_DB49	116	LCD_DB50
LCD_DB51	117	LCD_DB50	118	LCD_DB51
LCD_DB52	119	LCD_DB51	120	LCD_DB52
LCD_DB53	121	LCD_DB52	122	LCD_DB53
LCD_DB54	123	LCD_DB53	124	LCD_DB54
LCD_DB55	125	LCD_DB54	126	LCD_DB55
LCD_DB56	127	LCD_DB55	128	LCD_DB56
LCD_DB57	129	LCD_DB56	130	LCD_DB57
LCD_DB58	131	LCD_DB57	132	LCD_DB58
LCD_DB59	133	LCD_DB58	134	LCD_DB59
LCD_DB60	135	LCD_DB59	136	LCD_DB60
LCD_DB61	137	LCD_DB60	138	LCD_DB61
LCD_DB62	139	LCD_DB61	140	LCD_DB62
LCD_DB63	141	LCD_DB62	142	LCD_DB63
LCD_DB64	143	LCD_DB63	144	LCD_DB64
LCD_DB65	145	LCD_DB64	146	LCD_DB65
LCD_DB66	147	LCD_DB65	148	LCD_DB66
LCD_DB67	149	LCD_DB66	150	LCD_DB67
LCD_DB68	151	LCD_DB67	152	LCD_DB68
LCD_DB69	153	LCD_DB68	154	LCD_DB69
LCD_DB70	155	LCD_DB69	156	LCD_DB70
LCD_DB71	157	LCD_DB70	158	LCD_DB71
LCD_DB72	159	LCD_DB71	160	LCD_DB72
LCD_DB73	161	LCD_DB72	162	LCD_DB73
LCD_DB74	163	LCD_DB73	164	LCD_DB74
LCD_DB75	165	LCD_DB74	166	LCD_DB75
LCD_DB76	167	LCD_DB75	168	LCD_DB76
LCD_DB77	169	LCD_DB76	170	LCD_DB77
LCD_DB78	171	LCD_DB77	172	LCD_DB78
LCD_DB79	173	LCD_DB78	174	LCD_DB79
LCD_DB80	175	LCD_DB79	176	LCD_DB80
LCD_DB81	177	LCD_DB80	178	LCD_DB81
LCD_DB82	179	LCD_DB81	180	LCD_DB82
LCD_DB83	181	LCD_DB82	182	LCD_DB83
LCD_DB84	183	LCD_DB83	184	LCD_DB84
LCD_DB85	185	LCD_DB84	186	LCD_DB85
LCD_DB86	187	LCD_DB85	188	LCD_DB86
LCD_DB87	189	LCD_DB86	190	LCD_DB87
LCD_DB88	191	LCD_DB87	192	LCD_DB88
LCD_DB89	193	LCD_DB88	194	LCD_DB89
LCD_DB90	195	LCD_DB89	196	LCD_DB90
LCD_DB91	197	LCD_DB90	198	LCD_DB91
LCD_DB92	199	LCD_DB91	200	LCD_DB92
LCD_DB93	201	LCD_DB92	202	LCD_DB93
LCD_DB94	203	LCD_DB93	204	LCD_DB94
LCD_DB95	205	LCD_DB94	206	LCD_DB95
LCD_DB96	207	LCD_DB95	208	LCD_DB96
LCD_DB97	209	LCD_DB96	210	LCD_DB97
LCD_DB98	211	LCD_DB97	212	LCD_DB98
LCD_DB99	213	LCD_DB98	214	LCD_DB99
LCD_DB100	215	LCD_DB99	216	LCD_DB100
LCD_DB101	217	LCD_DB100	218	LCD_DB101
LCD_DB102	219	LCD_DB101	220	LCD_DB102
LCD_DB103	221	LCD_DB102	222	LCD_DB103
LCD_DB104	223	LCD_DB103	224	LCD_DB104
LCD_DB105	225	LCD_DB104	226	LCD_DB105
LCD_DB106	227	LCD_DB105	228	LCD_DB106
LCD_DB107	229	LCD_DB106	230	LCD_DB107
LCD_DB108	231	LCD_DB107	232	LCD_DB108
LCD_DB109	233	LCD_DB108	234	LCD_DB109
LCD_DB110	235	LCD_DB109	236	LCD_DB110
LCD_DB111	237	LCD_DB110	238	LCD_DB111
LCD_DB112	239	LCD_DB111	240	LCD_DB112
LCD_DB113	241	LCD_DB112	242	LCD_DB113
LCD_DB114	243	LCD_DB113	244	LCD_DB114
LCD_DB115	245	LCD_DB114	246	LCD_DB115
LCD_DB116	247	LCD_DB115	248	LCD_DB116
LCD_DB117	249	LCD_DB116	250	LCD_DB117
LCD_DB118	251	LCD_DB117	252	LCD_DB118
LCD_DB119	253	LCD_DB118	254	LCD_DB119
LCD_DB120	255	LCD_DB119	256	LCD_DB120

